

Profile



BMW
Steels Ltd

The BMW Constellation



Wear Resistance

Alumina
Ceramic
Division

BMW
Steels Ltd
(Unit-2)
Khurja

Cast
Basalt
Division

BMW
Steels Ltd
Roorkee
(U.K.)

Chemically
Bonded
Ceramic
Division

BMW
Steels Ltd
Hathras
(U.P.)

Fabrication
& Equipment
Manufacturing
Division

BMW
Steels Ltd
Hathras
(U.P.)

Sadabad
Gate
Hathras
(U.P.)

Manhar
Steels
Roorkee
(U.K.)

Casting
Division

Roorkee
(U.K.)

Research &
Development

BMW
Steels Ltd
Khurja
(U.P.)

Agriculture

Organic
Farms
Roorkee
(U.K.)

Energy

Bharat
Bio Urja
Roorkee
(U.K.)

UBDL
Roorkee
(U.K.)

Chairman's Message



One of the key pillars of the Company's strategy is to continue to innovate new products and invest in R&D in India so that company is globally competitive and delivers world-class products to its customers.

The Financial Year 2012-13 & 13-14 saw slurry of stalled infrastructure projects, and billions of rupees of the project developers and the vendors to the project were stuck up leading to structural weakness across the segments. Private power developers and EPC companies' stalled projects hit our company also and our stride to incremental business was halted. With the new government in the center FY 2014-15 is indicating mild trends of macroeconomic recovery in several major economic indicators.

Companies export market US and Europe still reel under structural weaknesses continues to be a major threat to the export targets of the company in the medium term. The global wear resistance industry (Alumina Ceramic, Basalt and Cast able Ceramic) need to make the industry more competitive and sustainable in the long-term.

To sustain growth company has innovated new products like Variable Orifices, Coal Rope Breakers in Coal piping system, the largest user system of Alumina Liners globally.

R&D foray of the company has provided exiting growth trajectory of corrosion resistant products, this will impact the demand in chemical industry dynamics and provide value addition to the company.

ATUL KUMAR LOHIA

Chairman



Contents

Chairman Message	01
About Us	03
Business Overview	04
Product Range	05
Technical Specifications	13
Manufacturing Capabilities	14
Registrations & Approvals	19
Testimonials	20

About Us

Friction, wear, and erosion are major issues, resulting in major costs to businesses operating in the Power Generation, Cement Plants, Mineral Processing and other engineering industries. BMW uses its core strengths of custom engineering, materials expertise, operational excellence, and rapid execution, to help customers develop amazing solutions to their toughest technical challenges.

With the support of excellent manufacturing infrastructure, experienced engineers, technicians and staff, BMW has to its credit developed many proprietary equipments like Variable Orifices, Coal Rope Breaker system for coal piping and many more.

Effectiveness of our material for wear resistance has been tested in actual use, at various power plants and other industries including NTPC, BHEL, Alstom, Doosan, Vedanta, Tata Power and many more. Our wear protection capabilities have been evaluated and successfully established for wear and erosion resistance in laboratories like CSIR, CPRI Labs too.

BMW products have been proved second to none in the industry.

Wear Resistant Lining

- Alumina Ceramic Liner and Grinding Media (ALUMINA92™)
- Cast Basalt Cylinders and Tiles (BASALT450™)
- Chemically Bonded Lining (Wear Seal CBC™)
- Alumina Based Wear Seal™ Series of Mortar, Putty & Liners
 - Wear Seal™ Diamond
 - Wear Seal™ CBC
 - Wear Seal™ Mortar
- Fabrication for Lined Equipment

Wear Resistant Iron Castings

- Ni-Hard
- Hi-Chrome
- Manganese Steel

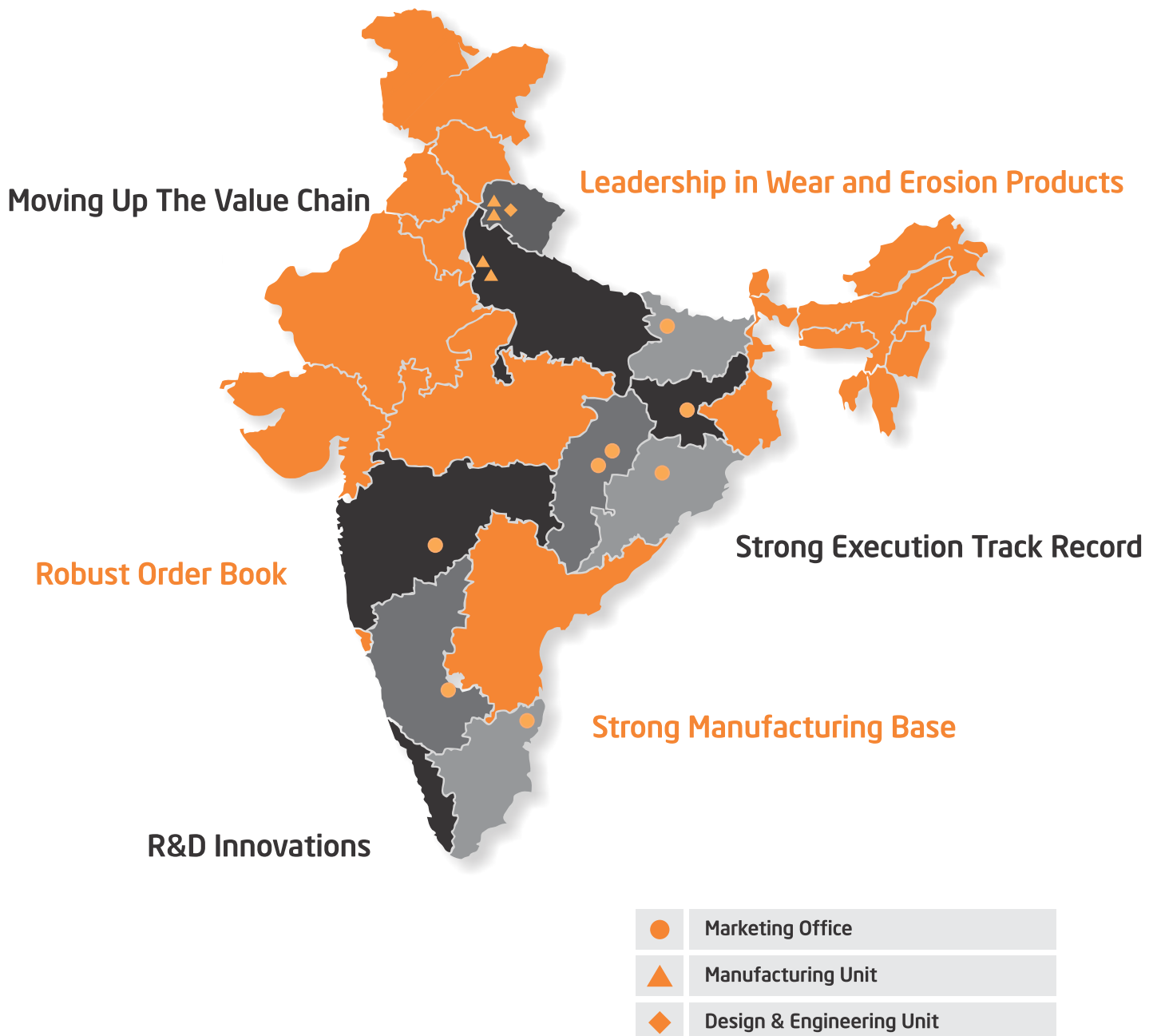
Pipe Connection Coupling System

- Grooved Coupling
- Slip on Type Coupling
- Quick Release Coupling
- Flexible Coupling



Business Overview

Advanced Design & Engineering Capabilities



Product Range

Alumina Ceramic - Alumina92™ Coal Pipeline Products



Coal Pipe Bends and Straight Pipes



Coal Pipe Line Nozzle



Variable Orifice



Fixed Orifices





Alumina Ceramic - Alumina92™ Coal Mill Equipment

Classifier Inner Cone



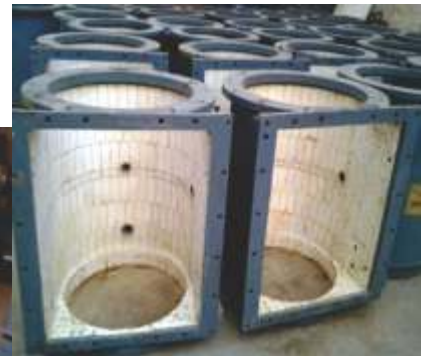
Classifier Assembly



Ventury Outlet



Mill Discharge Valve



Multiple Port Outlet



Transition Piece



Multiple Port Outlet Assembly



Alumina Ceramic- Alumina92™ Liners and Grinding Media

Wedge Shaped
and Pastable Liners



Pastable Liner (Hexagonal Liner)



Weldable Liners



Ball Mill Liners





Alumina Ceramic- Alumina92™ Liners and Grinding Media (...continued)

Orifice Liners



Grinding Media Balls and Cylpebs

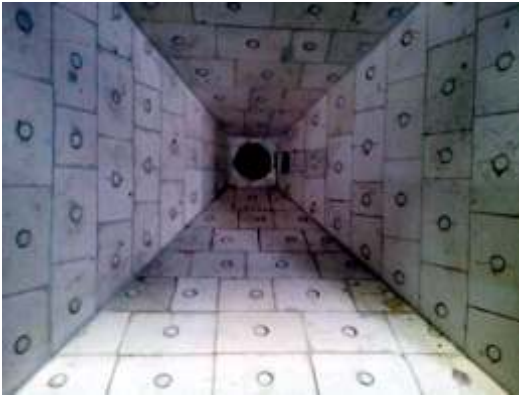


Cylinder Liners



Coal & Ash Handling Equipment

Coal Bunkers and Chutes



Bends and Y-Piece



Ash Pump Volute Casings



Dense medium Cyclones

Rubber Backed Impact Pads





Cast Basalt Liners

Pipes



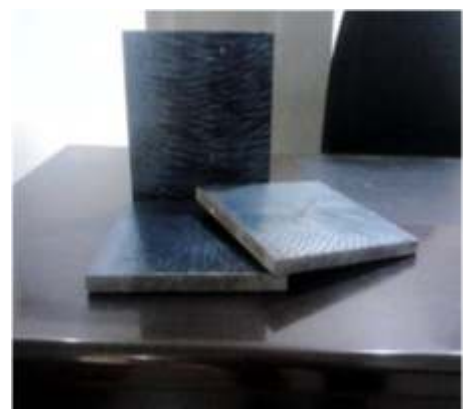
Trench Liners



Skid Pan Tiles



Rectangular Plates/Tiles



Cast Basalt Lined Equipment

Cast Basalt in Ash Pipeline & Bends



End Connection Systems

Victaulic Type Coupling and Shoulders





Brushable & Ganitable / Trowable Ceramics - CBC

CBC in Ash Pipeline and Bends
Ash Pipelines Bends and Pipes



CBC in Ash Sump Lining Slurry Disposal System

Y-Pieces



Laterals

Deflectors



Reducer



Insitu Sump Lining





Technical Specifications

Alumina 92™

1. Alumina Content	90 - 92 %
2. Bulk Density	3.6 gm / cc min
3. Hardness	9 on Moh's Scale
4. Water Absorption (Porosity)	Less than 0.01 % (Nil)
5. Cold Crushing Strength (CCS)	> 6,000 kg / sq cm
6. Flexural Strength	> 2,000 kg / sq cm
7. Temperature Resistance	1,200 Degree Celsius
8. Abrasion By Rubbing	0.01 gm (max)
9. Jet Erosion (Impingement)	0.05 gm / 30 sec
10. Colour	White
11. Operating Temperature	1,200 degree celsius

Basalt 450™

1. Bulk Density	2.8 - 3.0 gm / cc
2. Hardness	8 on Moh's Scale
3. Water Absorption (Porosity)	0.5% (max)
4. Cold Crushing Strength (CCS)	2,500 kg / sq cm (min)
5. Colour	Black
6. Thickness of Liner	Min 20 mm

Wear Seal CBC™

1. Hardness	8 on Moh's Scale
2. Compressive Strength	2,000 kg / cm ²
3. Max Operating Temp	250 deg F
4. Working Time	1 - 2 hours
5. Functional Time	48 - 72 hours
6. Color	Grey

Manufacturing Capabilities

Unit-I: Fabrication and Assembly Unit - Hathras (U.P.)

Production Capacity 300 Tons/month



CNC Miter Bend Welding Machine



CNC pipe profile cutting machine



Column & Boom Manipulator



NC Four Roll Pipe Bending machine



NC Vertical Rotary Table Welding



Paint Booth



Diamond Abrasive Cutter



Shot Blasting Chamber

Unit-II: Alumina Ceramic Division- Khurja (U.P.)

Production Capacity 7 Tons/day



Hydraulic Press - 1 (300MT)



CNC Hydraulic Press - 2 (500MT)



Spray Drier



Cylpebs Making Presses



Pot Mill



Ceramic Lined Ball Mill



Tunnel Furnace
(1550°C)

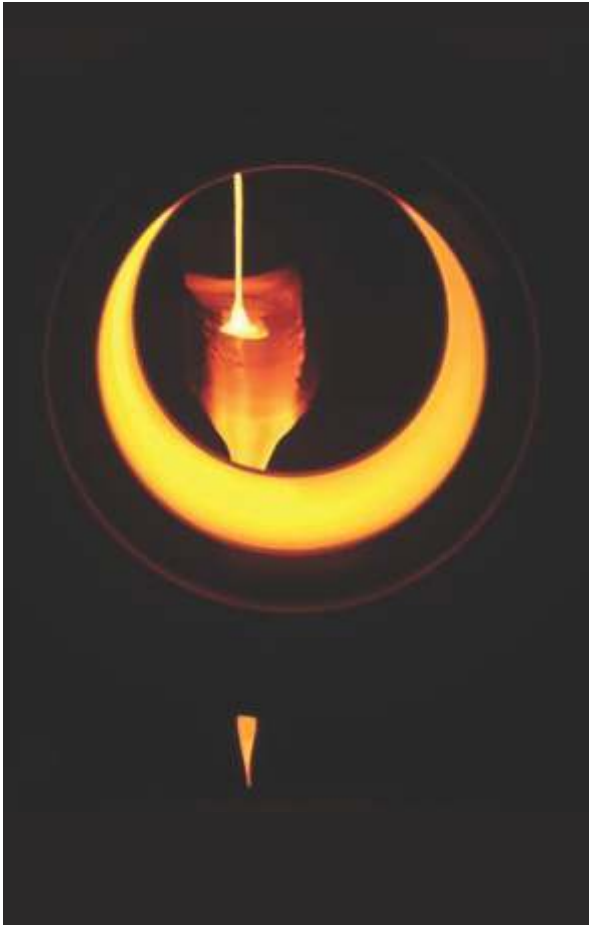


Lab Muffle Furnace
(1700Deg C)



Unit-III: Cast Basalt Division - Roorkee (U.K.)

Production Capacity 20 Tons/ day



Melting Furnace



Spinning Machine



Tunnel Furnace



Pouring In Moulds



Magnetic Particle Testing Machine



Ultrasonic Hardness Tester



Ultrasonic Thickness Gauge



Density Testing Apparatus



Hardness Testing Machine



Hydraulic Test Pump



Water Absorption Test



Deep Abrasion Test



Compressive Strength Test



Flexural Strength Test

Registrations & Approvals

Statutory Approvals

1. ISO 9001:2008 (UKAS)
2. BUREAU VERITAS
3. LLOYD'S REGISTER
4. INTERTEK
5. STEAG ENERGY



Registrations & Approvals

Consultants

1. Central Glass & Ceramic Research Institute
2. HOLTECH, Gurgaon

Inspection Agencies working with us

1. Lloyds Register Asia
2. Bureau Veritas
3. TUV
4. Project Development India Limited
5. SGS India Private Limited
6. Regional Inspection Office, NTPC, Noida
7. Intertek

EPC Contractors

1. Doosan Power Systems India Ltd.
2. Thyssen Krupp Industries India Ltd.
3. Lanco Infratech Ltd.
4. ALSTOM Power India Ltd.
5. CETHAR Ltd.
6. BGR Boilers Ltd.
7. Mitsubishi Heavy Industries Ltd., Bangalore
8. Ansaldo
9. Thermex Babcock
10. Mecawber Beekay Pvt. Ltd.
11. Bsbk Engineering Pvt. Ltd.
12. Osm Projects Pvt. Ltd.
13. Driplex Water Engineering Ltd.
14. Energo Engineers Pvt. Ltd.
15. China Western
16. Mecgale Pneumatics Pvt. Ltd.
17. Metso Minerals

Testimonials



Prestigious Clients

Power Plants



Steel Plants



EPC



Cement Plants



Mineral Processing Unit



Fertilizer



Aluminium Plants



Head Office

BMW Steels Ltd
Navipur Road, Hathras - 204 101
Uttar Pradesh INDIA
Mobile +91.96390 17000
Email sales@bmwsteels.com

Corporate Office

BMW Steels Ltd
32/49, Teg Bahadur Road
Lane#4, Dalanwala
Dehra Dun - 248 001
Uttarakhand

Marketing Office

BMW Steels Ltd
705, 7th Floor, RG Trade Tower
B-7 Netaji Subhash Place
Pitam Pura
New Delhi - 110 034



BMW
Steels Ltd

www.bmwsteels.com
www.bmwsteels.co.in